



AZ Electrical District's Growth

Kenneth R. Saline, PE

K.R. Saline & Associates PLC

Agenda

- **KRSA and Electrical and Water Districts' Introduction**
 - 1980: BSEE NMSU, UT Arlington Certificate on Advanced System Modelling, GE Certificate on Power Stability, Professional Engineer, New Mexico Farmer and landowner, and Small Business Owner.
 - 5 years at San Antonio Public Service Company Transmission Planning department
 - 7 years and Associate at R.W. Beck and Associates
 - 32+ years at K.R. Saline & Associates assisting Arizona municipal entities in electrical and water matters
- **Western Area Power Administration (WAPA) delivers Hoover, Parker Davis, Glen Canyon, and other power sources to Arizona's rural areas including WAPA transmission lines interconnecting Hoover to Phoenix and Yuma and expanded to Coolidge, Eloy, Maricopa, Tucson, Benson,**
- **USBR and WAPA market Federal Hydropower to Preference Customers including electrical and irrigation districts and Native American communities were added in 2005 by Arizona entities to encourage water right settlements on the Colorado and provide federal power benefits to those communities.**

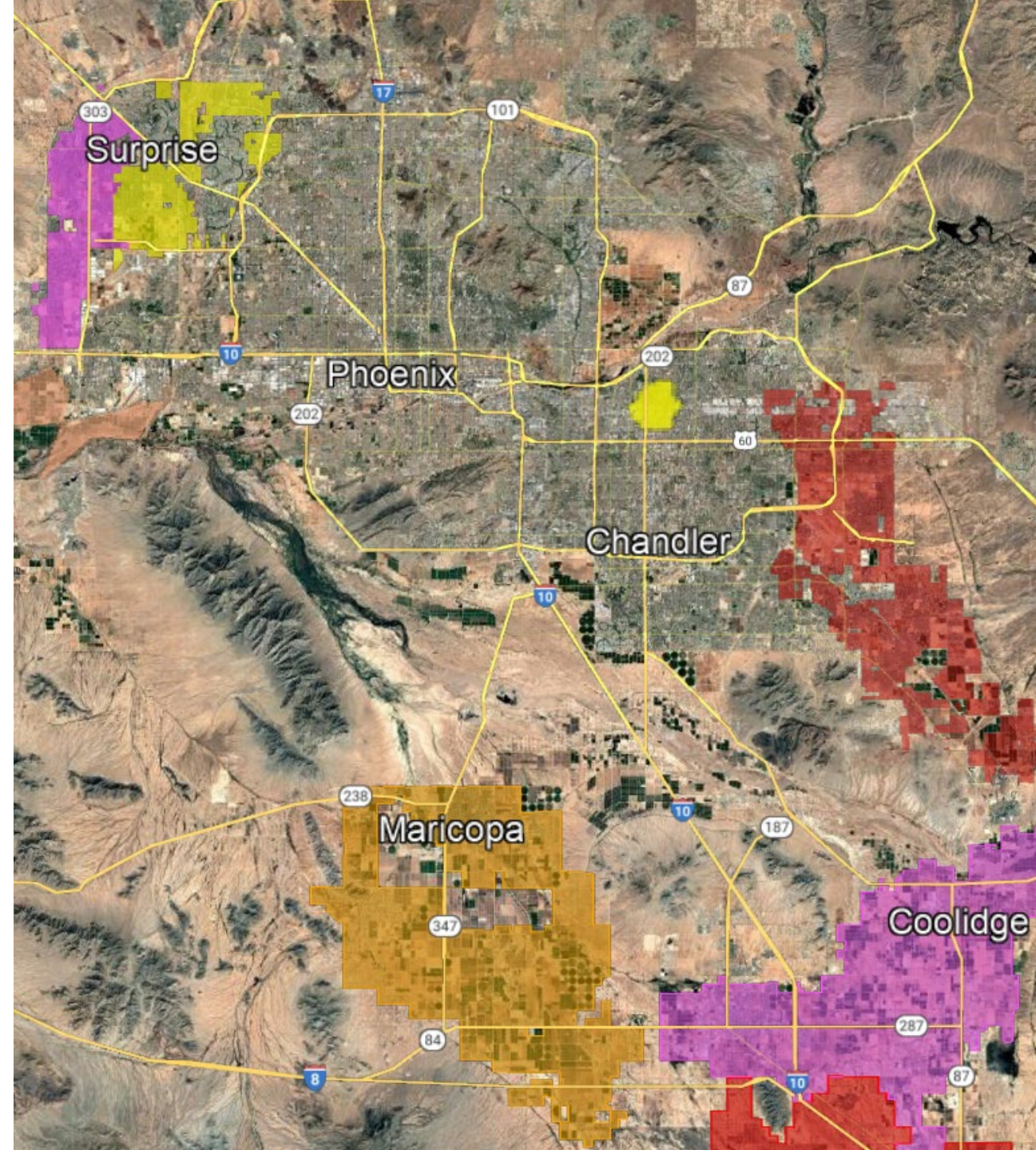
AZ Electrical Districts Around the Phoenix Electrical Load area

Electrical and Irrigation Districts are enabled to provide water and power in Arizona.

These entities have very limited power lines and would require to interconnect to the transmission systems of APS, SRP, or WAPA and do not have generation available over their current customers.

Like other Arizona utilities some Districts have been approached by large commercial and industrial load projects such as data centers and are working with APS in some cases to study their project.

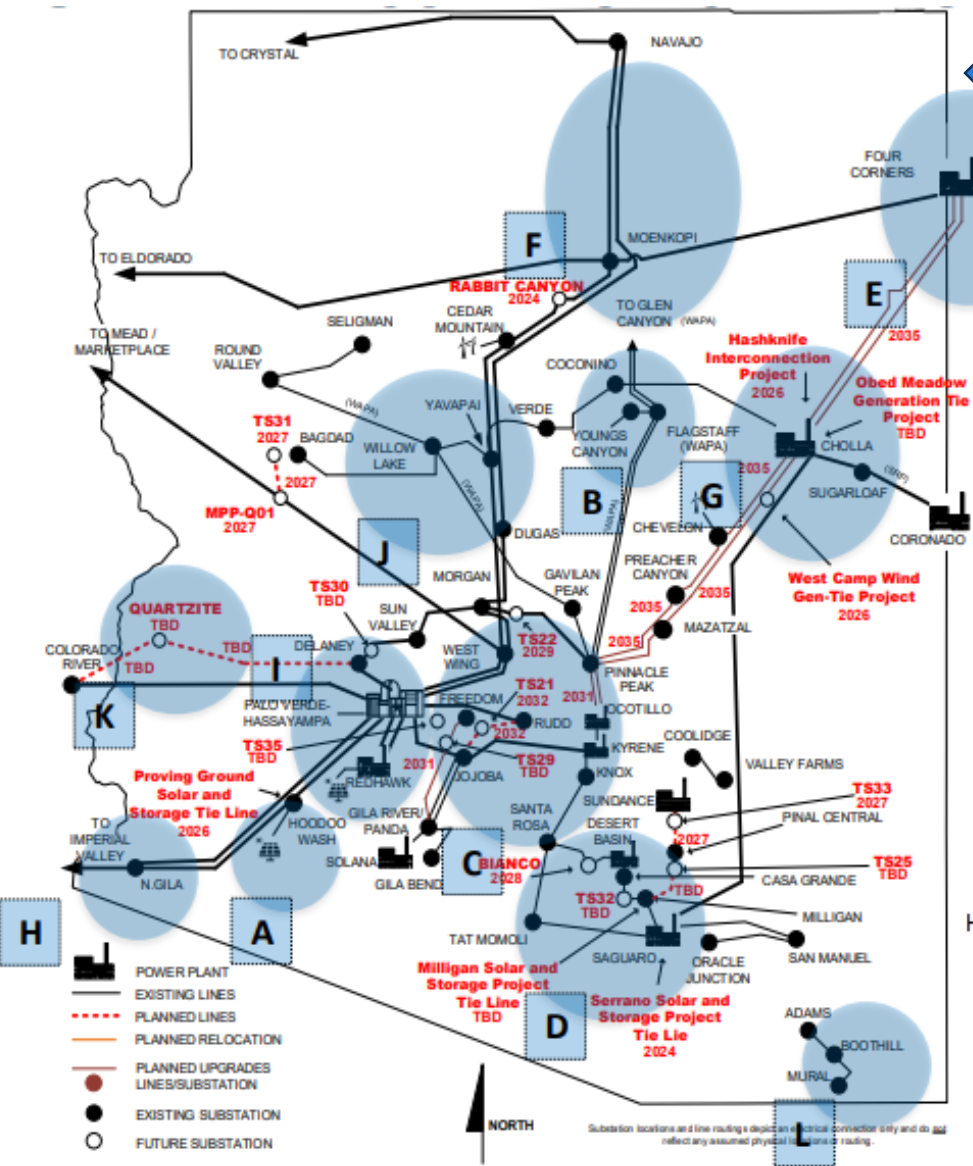
The study of these massive projects will be complicated due to their impacts on the transmission system of everyone.



Arizona's system - Load

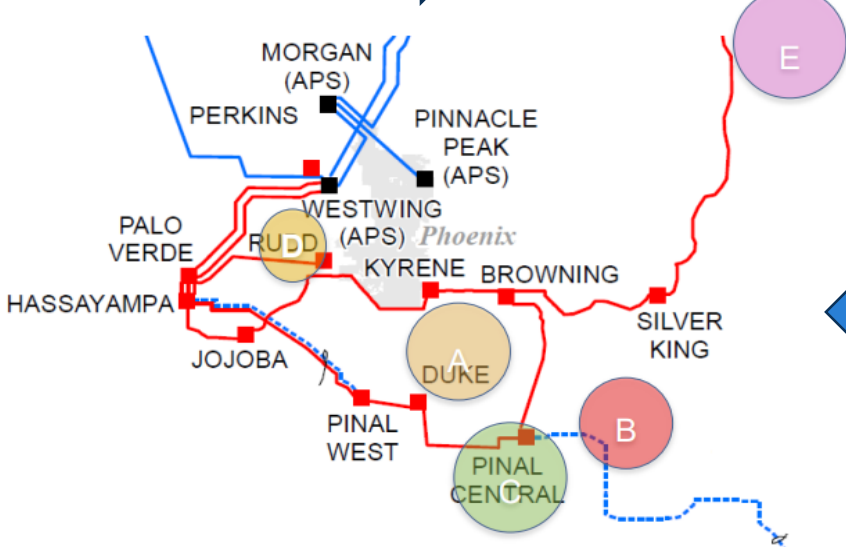
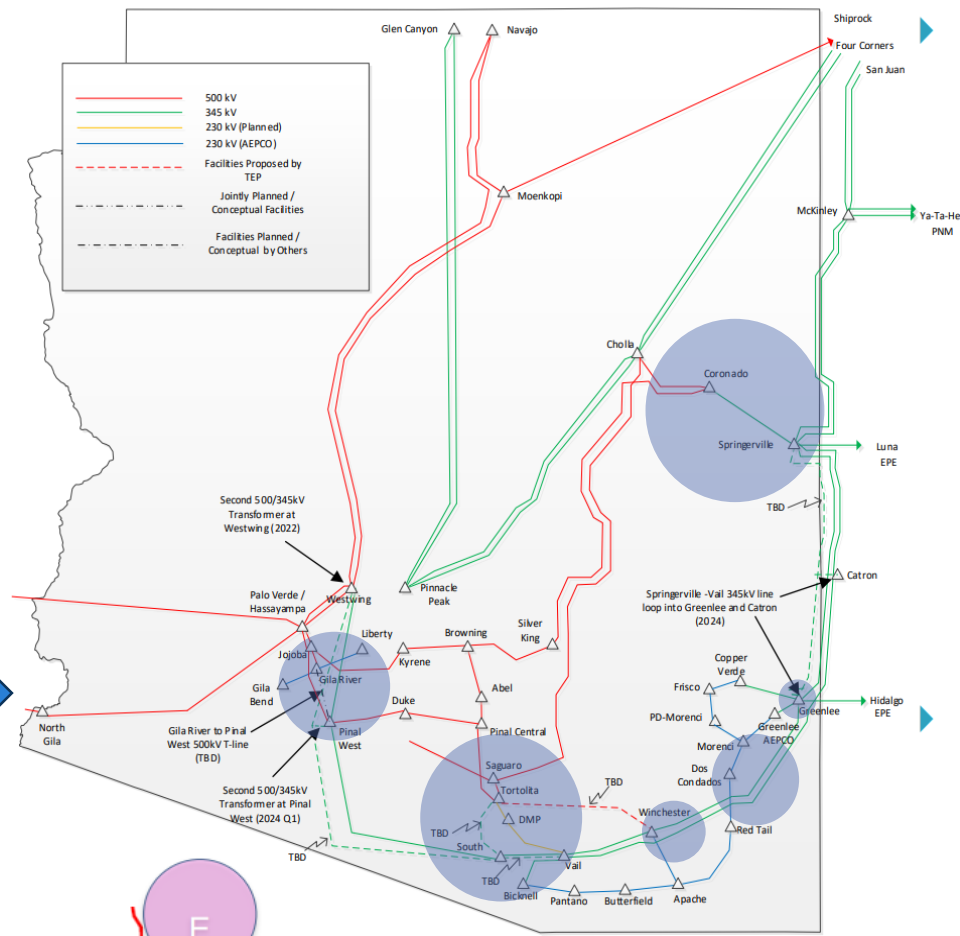
Entity	Peak Load (GW)		Max 10 year load growth
	2025	2035	
APS	8.5	8.9 - 11.1	31%
SRP	10	18 - 27	170%
TEP	2.4	2.8	17%
AZ Municipal Entities	.015	.315	315 MW/ 15MW = 2100%

Arizona's system - Gen



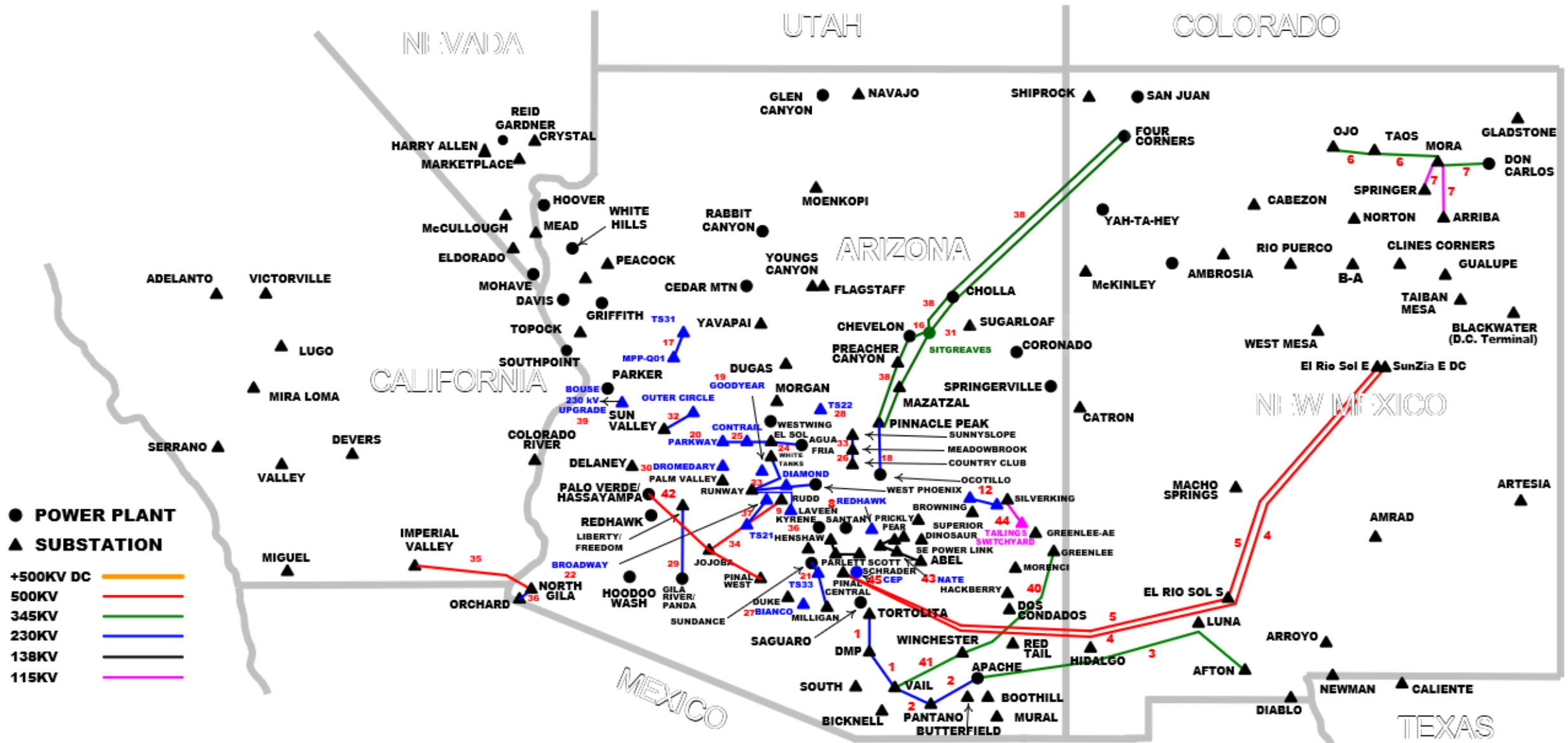
APS Queue
as of 12/4/2024
Total = 47,160MW

TEP Queue
as of 2/7/2025
Total = 7,059MW



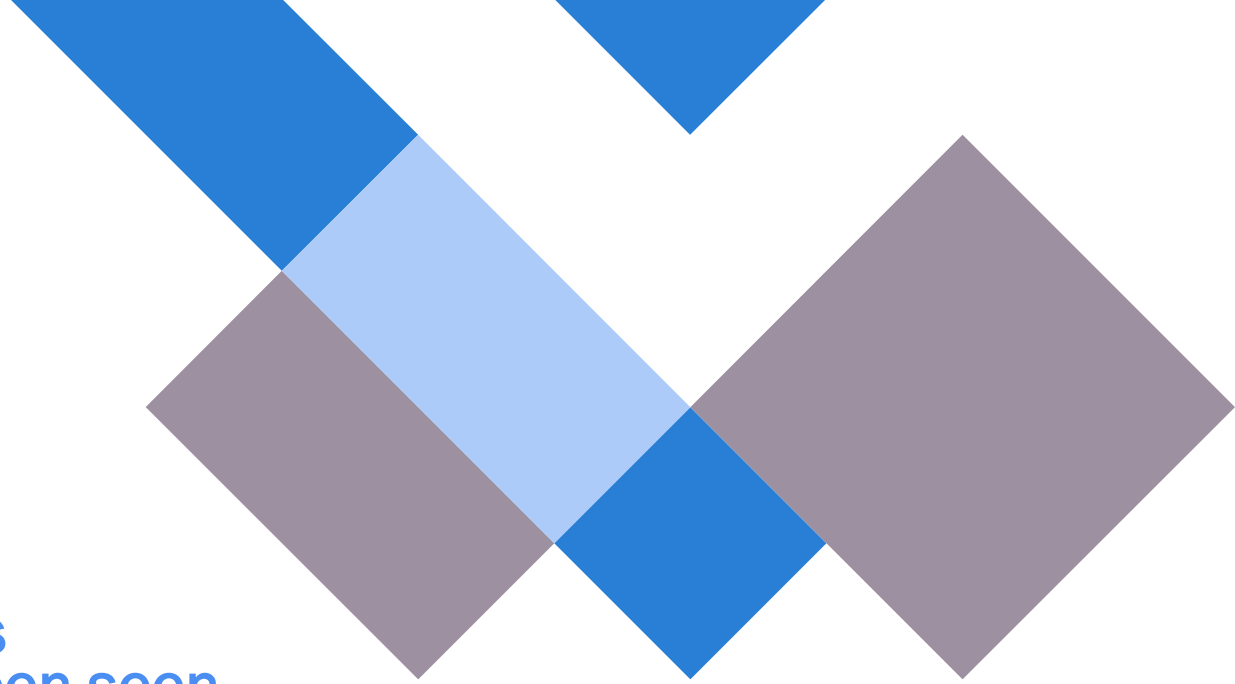
SRP Queue
as of 12/20/2024
Total = 4,654MW

Planned Transmission Upgrades



Final takeaways

- The increase in demand from data centers observed by APS, SRP, and TEP has also been seen in the various Electrical and Irrigation Districts in AZ
- KRSA supports the AZ municipal entities through working with Transmission Providers in the area while adhering to FERC regulations and including rural entities in the discussions as early as possible
- AZ entities will need to work together to address the reliability concerns facing Arizona's electrical system in the coming years





Thank you

K.R. Saline & Associates

480-610-8741

www.krsaline.com